



IQmark™

Digital Spirometer

Opening Windows® to the World of Medicine

Introducing a significant advancement in Spirometry

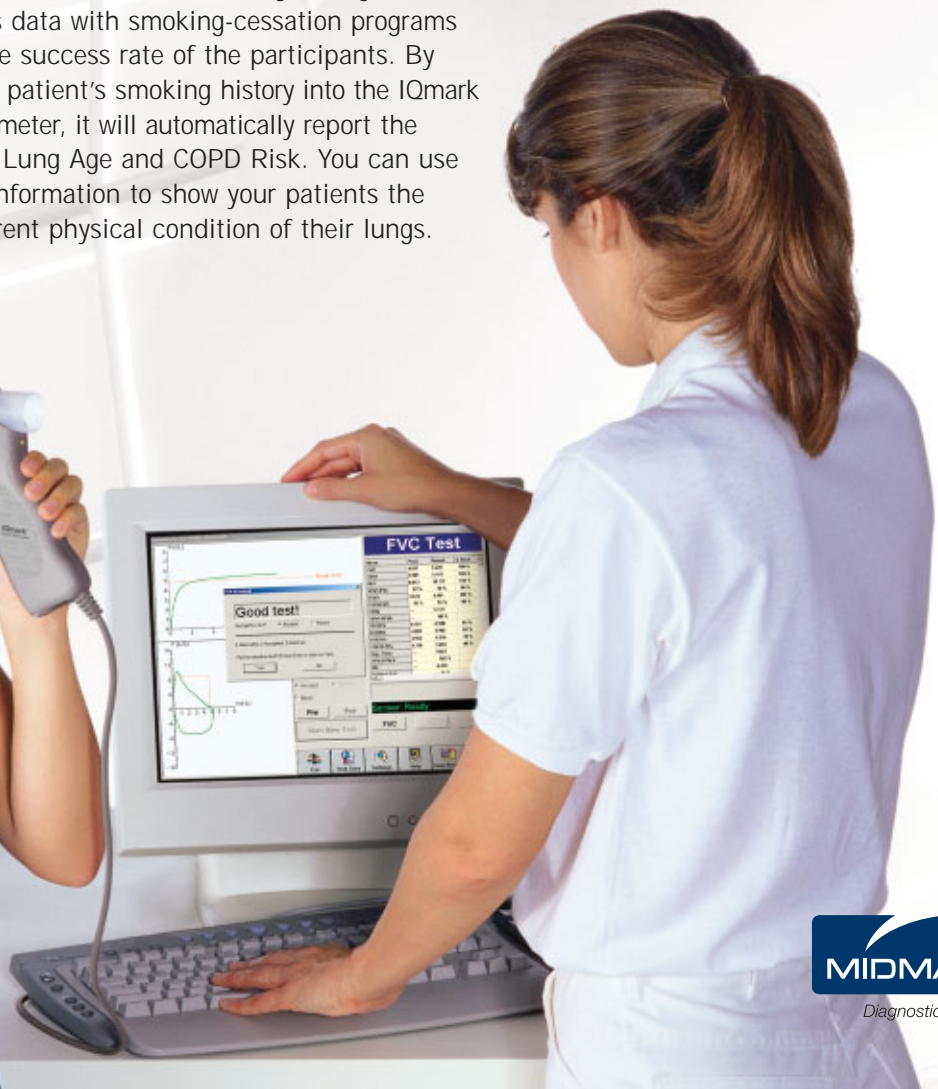
Weighing only 10 oz., the IQmark Digital Spirometer is a great addition to Midmark's digital diagnostic family. The IQmark Digital Spirometer meets or exceeds the strict requirements of the American Thoracic Society and is easy to use. It supplies you with all the measurements you require from a diagnostic Spirometer. This includes FEV₆ that is recommended by the NLHEP. The IQmark Digital Spirometer enables you to perform FVC, VC and MVV tests as well as printing full-page reports on standard 8½ x 11" paper. Performing Pre- and Post-Bronchodilator tests is straightforward for both you and your patients. The Spirometer utilizes a Disposable Pneumotach Mouthpiece that minimizes the chance of patient cross-contamination, ensuring safe and convenient testing. Using the Spirometer's data with smoking-cessation programs increases the success rate of the participants. By entering the patient's smoking history into the IQmark Digital Spirometer, it will automatically report the patient's Lung Age and COPD Risk. You can use this information to show your patients the current physical condition of their lungs.

Data-Management Philosophy

We know that many medical offices are either looking for Electronic Medical Records (EMR) software packages or have already incorporated an EMR into their practices.

To address this, Midmark has created an integration software solution that enables EMRs to directly acquire diagnostic data into their database.

Contact your Midmark representative to find out if your EMR is currently integrated or to discuss your future integration solutions.



Accurate and Precise

The IQmark Digital Spirometer was tested at LDS Hospital in Salt Lake City. Below is a summary table of the results compared to the spirometry recommendations of the ATS Standardization of Spirometry, 1994 Update.

Parameter	ATS	IQmark
FVC Accuracy	3.0%	Less than 2%
FVC Precision	3.5%	Less than 2%
FEV ₁ Accuracy	3.0%	Less than 2%
FEV ₁ Precision	3.5%	Less than 2%
PEF Accuracy	10.0%	Less than 5%
PEF Precision	5.0%	Less than 2%

Meets or Exceeds These Standards

ATS—American Thoracic Society, Standardization of Spirometry, 1994 Update

OSHA—Occupational Safety & Health Administration

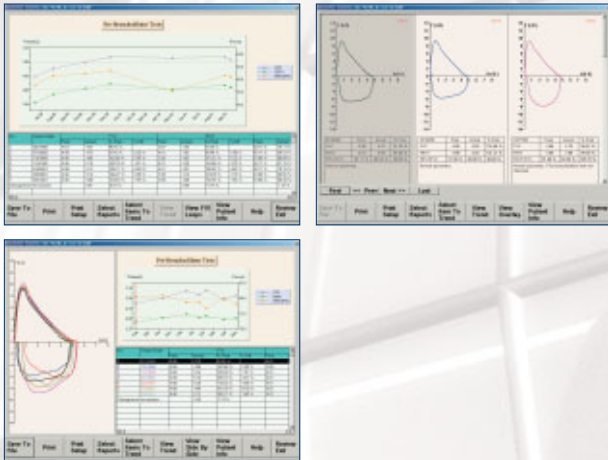
NIOSH—National Institute for Occupational Safety and Health

SSD—Social Security Disability

ERS—European Respiratory Society

ECCS—European Community for Coal & Steel

Trending – Included!



Minimum System Requirements

- Microsoft® Windows®-based PC running Windows 98, NT version 4.0, 2000/XP or newer with 500MB of disk space available
- CD-ROM drive, mouse and keyboard
- Intel® Pentium®-class microprocessor or compatible, 500MHz or faster
- VGA display—minimum 256 colors (16-bit recommended)
- Minimum RAM—16MB for Windows 98, 32MB for NT, 64MB for 2000/XP
- One COM port (RS232 serial port or USB port)

Disposables

Reorder Part # 2-100-1200

Box of 25 Disposable Pneumatich Mouthpieces

For more information or a demonstration, contact your Midmark dealer or Call: 1-800-MIDMARK Fax: 1-800-365-8631
 Outside the U.S.A. Call: 1-937-526-3662 Fax: 1-937-526-4604
 Technical Service: 800-624-8950 · 310-530-5955 · FAX 310-530-2697
 Visit our website at midmarkdiagnostics.com or midmark.com

©Midmark Corporation 2003
 60 Vista Drive P.O. Box 286 Versailles, Ohio 45380-0286
 Products subject to improvement changes without notice.
 Litho in U.S.A. · 007-0375-00 · 3/04

IQmark Digital Spirometer Specifications

Real-Time Graphics	Flow-Volume, Volume-Time
Reports Full Size 8.5 x 11 in.	Customizable and Preprogrammed
Predicted Equations	Crapo (ITS/ATS), NHANES III (Hankinson), Knudson, Morris, Roca, ECCS, Hsu (Pediatric), Polgar (Pediatric), Zapletal (Pediatric)
Interpretation	ATS NHANES III (NLHEP)
Calibration	3-Liter Syringe
Power	Two 1.5V AAA alkaline batteries (serial version) USB version operates without batteries
Dimensions	7 x 2.25 x 1.5 in.
Weight	10 oz.
Mouthpiece Resistance	1.043 cmH ₂ O/L/sec @ 14L/sec flow



Diagnostics Group